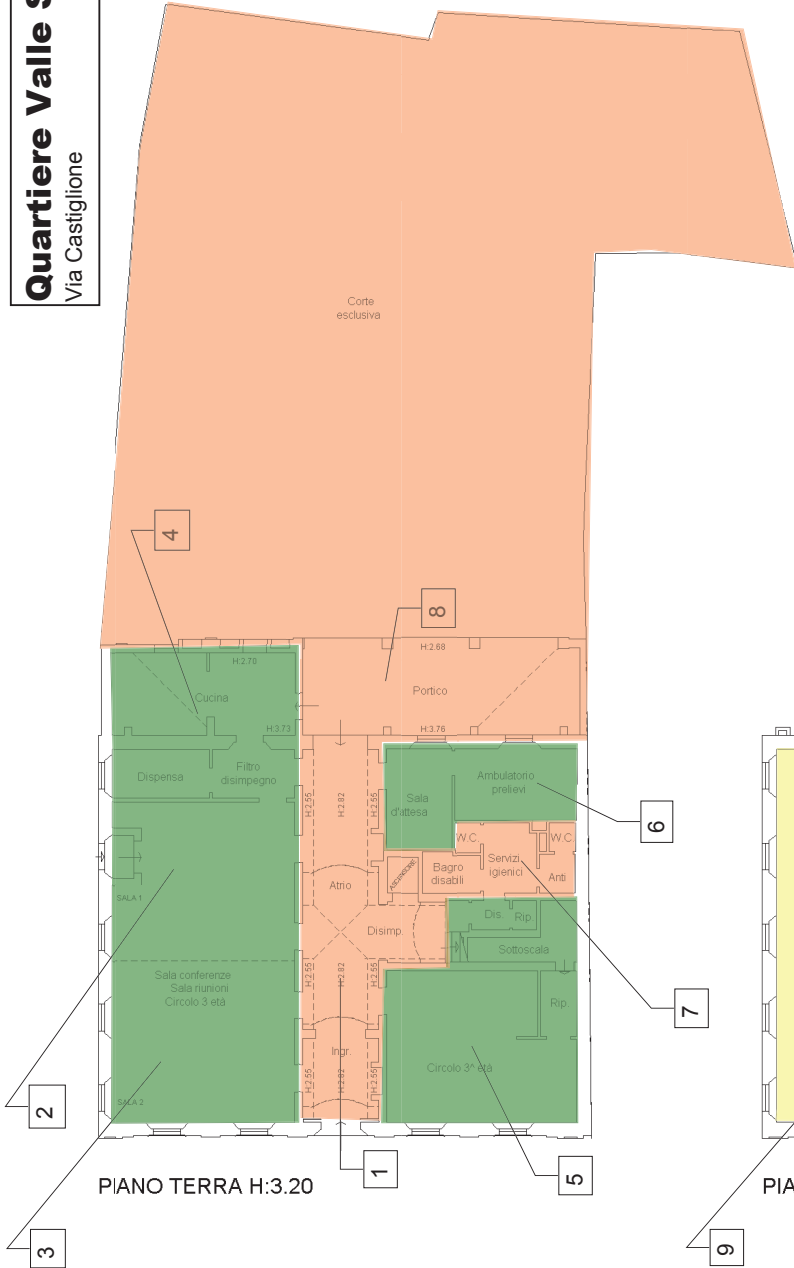
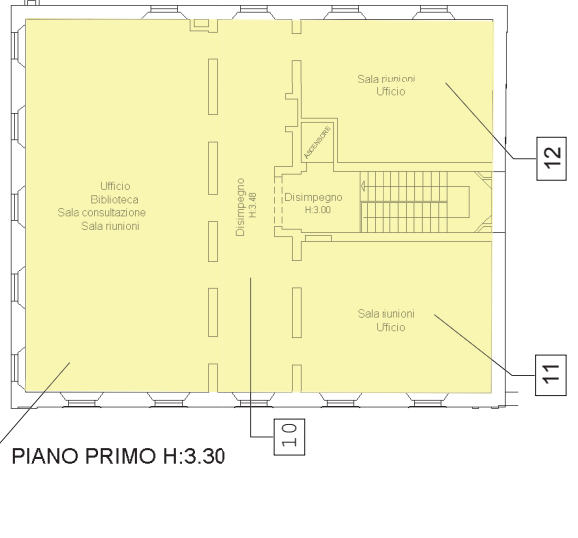


Quartiere Valle Savio
 Via Castiglione

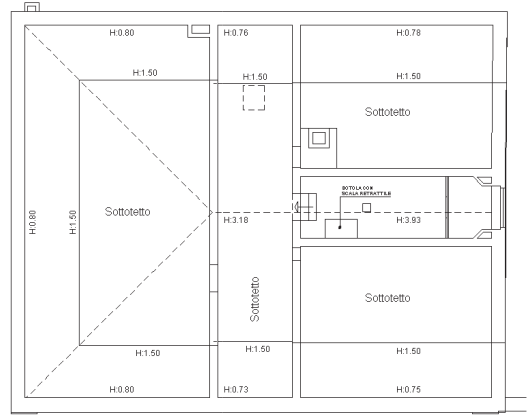


PIANO TERRA H:3.20

1 Ingr.+atrio + dis.	mq 48,44
2 sala 1	mq 40,80
3 sala 2	mq 40,80
4 cucina+dis+disp	mq 32,64
5 circolo 3 età	mq 43,36
6 sala att+ambul	mq 20,82
7 serv.igien.	mq 13,09
8 portico	mq 37,44
9 biblioteca	mq 95,20
10 disimp.	mq 45,20
11 sala riunioni	mq 39,20
12 sala riunioni	mq 35,34



PIANO PRIMO H:3.30



PIANO SECONDO